



Cleaning



Tablets



Pumps

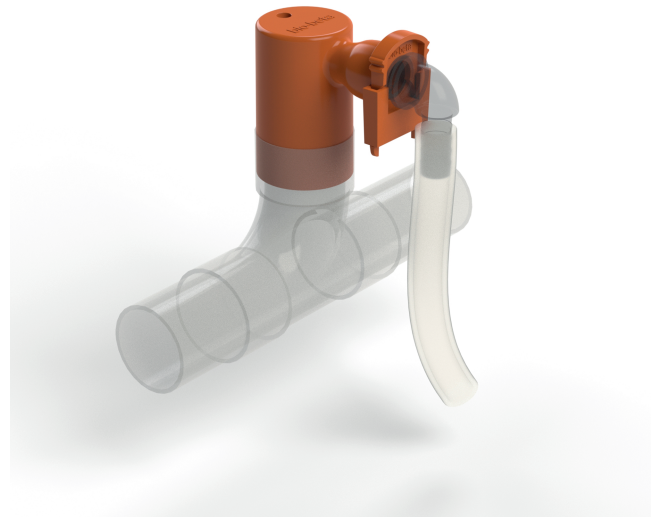


Ancillaries

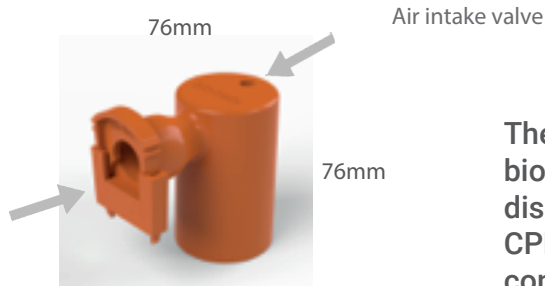
Technical data sheet CPH17



- Quick release connector prevents hose kink
- Integral air admittance valve
- Fits industry standard solvent weld fittings
- Prevents odours & water leaks
- Robust ABS plastic construction
- U.K. Manufactured
- Complies with Statutory Regulations



Statutory regulations require all indoor drainage connections to be water tight.



Quick release 360 Coupler

Barb fits 1/2 inch discharge hose
Connector fits industry standard 40mm solvent weld pipe.

The Gel-clear CPH17 header drain connector is part of the bio-beta range of products. Designed for condensate pump discharge hose connections in the food retail cold chain, the CPH17 connector brings a water-tight seal to header drain connections stopping odour venting, backwash leaks and negative pressure in header drains. The connector prevents discharge hose pipes kinking with a 360 degree rotating hose barb, with quick release fitting.

Related products

Suitable for industry standard solvent weld fittings

Drain hose	
50-40mm reducer	
Strap on Boss connector	

User Guide QR Code

