

RM_MUT

COMPACT 4-WAY CASSETTE



The compact 4 way cassette has been especially designed for small commercial application where a compact efficient unit is needed.

Design

- Elegant and Flat appearance
- Fit within the T-bar of grid ceiling : 620mm X 620mm.

Comfort

- Individual setting of louver position: 3 different swing mode: standard, diagonally, opposite, turn around.
- 5 steps air flow.

Easy to install

- Compact and thin chassis with only 256mm height
- Built-in high-lift drain pump
- Light-weight unit, for easy and quick installation.

SCOP MAX



4.60

CAPACITY



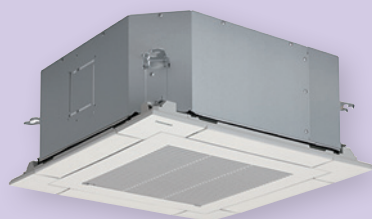
2.5kW > 6kW

OPERATION



-27°C > +52°C

Occupancy sensor switches off automatically the unit if nobody is in the room to save energy.



INDOOR UNITS

RAV-RM301MUT-E/TR
RAV-RM401MUT-E/TR
RAV-RM561MUT-E/TR

SDI



DI



OUTDOOR UNITS

RAV-GP561ATP-E/TR

RAV-GM301ATP-E/TR
RAV-GM401ATP-E/TR
RAV-GM561ATP-E/TR



REMOTE CONTROLS

RBC-AX32UM(W)-E
TCB-AX32E2

RBC-AMS55E-ES(EN)
RBC-AMS41E
RBC-AMT32E
RBC-AS41E

COMPACT 4-WAY CASSETTE Performance data with Super Digital Inverter Series 1 **PRELIMINARY DATA**

Outdoor unit		RAV-GP561ATP-E	
Indoor unit (Cassette)		RAV- RM561MUT-E	
Cooling capacity	kW	5.0	
Cooling range (min. - max.)	kW	1.2 - 5.6	
Power input (min. - rated - max.)	kW C	TBD - 1.56 - TBD	
EER		3.21	
SEER		6.02	
Energy efficiency class	C	A+	
Seasonal electricity consumption	kWh/a C	TBD	
Heating capacity	kW	5.6	
Heating range (min. - max.)	kW	0.9 - TBD	
Power input (min. - rated - max.)	kW H	TBD - 1.6 - TBD	
COP	W/W	3.48	
SCOP		4.30	
Energy efficiency class	H	A+	
Seasonal electricity consumption	kWh/a H	TBD	

TBD: To Be Determined

COMPACT 4-WAY CASSETTE Performance data with Digital Inverter Series 1 **PRELIMINARY DATA**

Outdoor unit		RAV-GM301ATP-E		RAV-GM401ATP-E		RAV-GM561ATP-E	
Indoor unit (600X600 Cassette)		RAV- RM301MUT-E		RAV- RM401MUT-E		RAV- RM561MUT-E	
Cooling capacity	kW	2.5		3.6		5.0	
Cooling range (min. - max.)	kW	0.9 - 3.0		0.9 - 4.0		1.5 - 5.6	
Power input (min. - rated - max.)	kW C	0.25 - 0.59 - 0.82		0.18 - 0.90 - 2.00		0.30 - 1.65 - 1.86	
EER		4.24		4.00		3.05	
SEER		5.53		5.35		5.49	
Energy efficiency class	C	A		A		A	
Seasonal electricity consumption	kWh/a C	158		235		319	
Heating capacity	kW	3.4		4.0		5.3	
Heating range (min. - max.)	kW	0.8 - 4.5		0.8 - 5.0		1.5 - 6.3	
Power input (min. - rated - max.)	kW H	0.17 - 0.76 - 1.40		0.14 - 0.95 - 1.70		0.30 - 1.60 - 2.40	
COP	W/W	4.47		4.21		3.61	
SCOP		4.60		4.34		4.27	
Energy efficiency class	H	A++		A+		A+	
Seasonal electricity consumption	kWh/a H	705		1032		1279	

COMPACT 4-WAY CASSETTE Physical data indoor **PRELIMINARY DATA**

Indoor unit		RAV- RM301MUT-E		RAV- RM401MUT-E		RAV- RM561MUT-E	
Air flow (H/L)	m³/h - l/s	640/440 - 177/122		660/468 - 183/130		798/546 - 221/152	
Sound pressure level (H-M-L)	dB(A)	38 - 36 - 30		41 - 36 - 32		44 - 39 - 35	
Sound power level (H-I-M)	dB(A)	53 - 51 - 45		56 - 51 - 47		59 - 54 - 50	
Dimensions (HxWxD)	mm	256 x 575 x 575		256 x 575 x 575		256 x 575 x 575	
Weight	kg	15		15		15	
Panel dimensions (HxWxD)	mm	12 x 620 x 620		12 x 620 x 620		12 x 620 x 620	
Panel weight	kg	2.5		2.5		2.5	

C: cooling mode
H: heating mode
H-M-L: High - Medium - Low speed

LIGHT COMMERCIAL